

BATTERY MONITORING DEVICES

SMART-UP



Data Logger useful to understand if the batteries have been correctly charged and discharged to the optimum level

MONITORING BATTERY DATA

- Measured instantaneous data: Voltage, Current, Charging/Discharging Time and Ah
- Storage and analysis of historical data
- Statistic analysis
- Data download on USB to the PC

SENDING BATTERY DATA TO A PC

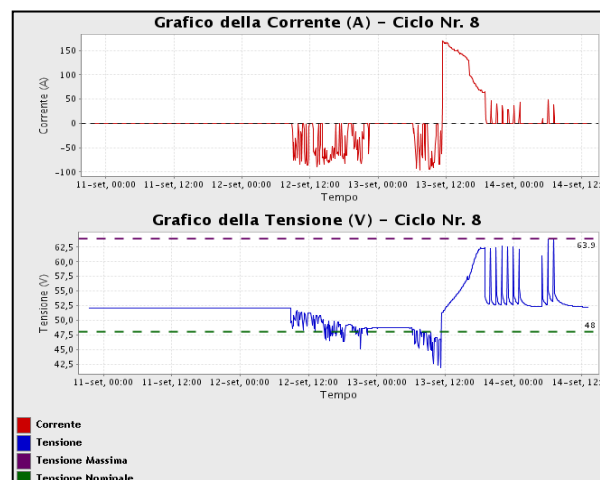
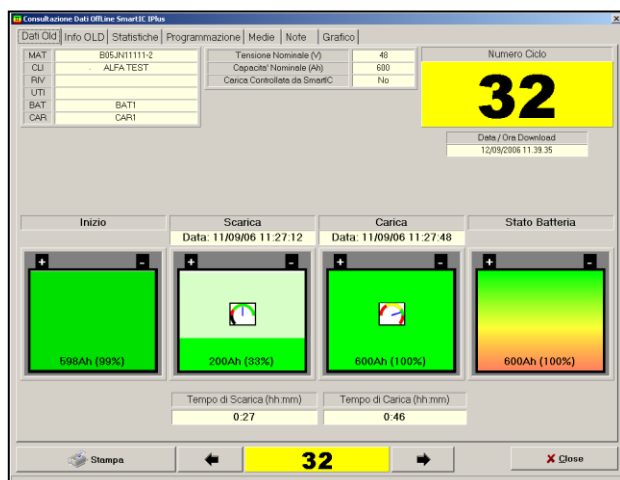
Through a USB stick all data can be sent to the **SMART.VIEW** Software, which makes it possible to display them in form of working cycles and diagrams.

SENDING BATTERY DATA TO THE WEB

Data stored on a Flash USB driver can be uploaded to the **SmartService** WEB application for:

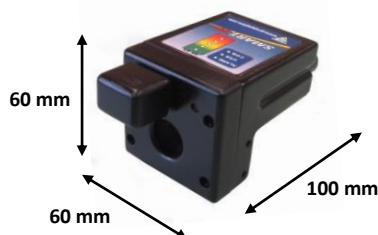
- automatic analysis and reports
- integrated "SmartIC-like" management fleet

DISPLAYING WORKING CYCLES



FEATURES:

- Data Memory: 400 working cycles
- For 24/36/48/72/80/96V batteries (12V available on request)
- Hall effect sensor
- Discharge time and capacity
- Battery faults and failures occurring during the charging process
- Temperature indication (when sensor is fitted)
- Low electrolyte level (when electrolyte level probe is fitted)
- Possibility of Serial Connection RS 485 and CAN BUS
- Protection IP54
- Working temperature from -20° to +50°



Model	Ah Battery
T200	100 ÷ 340
T400	350 ÷ 740
T800	750 ÷ 1500